

Centrs, Rīga, Lāčplēša iela 7, Latvia

1 250 € 14.20 EUR/m²

Basic information

Property type: Apartment

Rooms: 3

Floor: 4. from 7.

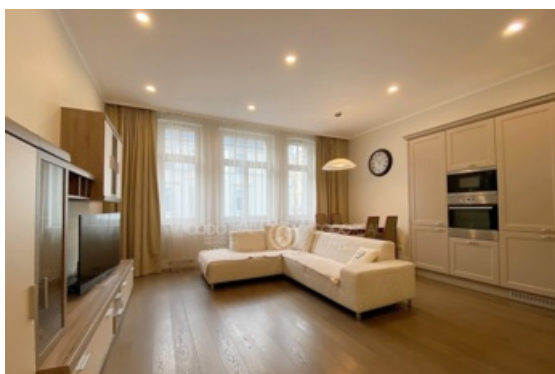
Area: 88.0 m²

Building type: Stone

Series: Renovated building

Elevator: Yes

Balcony: Yes



Additional information

With balcony, high quality new apartment in a capital renovated building- Art Nouveau style at the intersection of the street School and Lacplesa.

Plan :

- large entrance hall with a spacious built-in wardrobe with mirror, living room combined with kitchen area, 2 bedrooms, bathroom with shower and WC, balcony overlooking the Lacplesa street.

The finish and furnishings:

- natural colours designed interior, wide windowsills, high ceilings - 3.30 m, wooden windows with energy-efficient selective coating, hardwood floors.
- in the bathroom - new, quality sanitary ware, shelves, large mirror, lighting, underfloor heating,
- fully equipped kitchen - ceramic hob, oven, extractor hood, dishwasher, refrigerator,
- from the windows of the apartment overlook a quiet, wide courtyard and Lacplesa street, E-W direction - in the apartment you can enjoy the sun both in the morning and in the evening.

Environment and infrastructure:

- lovely, quiet neighbors, entrance on the landing as from the front side and wide patio,
- elegant entrance, intercom,
- new elevators, private warehouse - basement - for bicycle, baby stroller, etc.
- it is possible to auto post in the paid guarded parking near the house,
- close to public transport, shops, restaurants, cafes, beauty salons, sport complex, medical centre ARS', hotel Radisson Blue Hotel Latvia'. On foot a 3 minute walk from the Esplanade, the Park Kronvalda, Vērmanģdārzs, Old town 7 minute walk.









